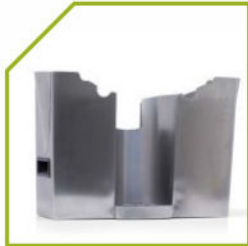


# ■ ■ ■ AUTO-PRO

## SMART AUTOMATION

Following the philosophy of simplicity and robustness of its smaller siblings, we have built a juicer designed for higher consumption, incorporating an automatic orange feeder and self-service tap.

### TYPE OF CONSUMPTION



Ergonomic bin. Empty both containers and drip tray in a single movement.



Self-service tap.



Automatic orange feeder.

## SPECIFICATIONS

- ✓ Automatic orange feeder and programmer with optional counter.
- ✓ Input capacity: 22 oranges per minute.
- ✓ Basket capacity: 10 kg of oranges.
- ✓ Maximum free height for juice container: 18 cm.
- ✓ Dimensions: 46x47x96 cm (54.5x51x104 cm with packaging).
- ✓ Weight: 58 kg (61 kg with packaging).
- ✓ Orange size: 60-80 mm Ø.
- ✓ Power: 200 W.
- ✓ Voltage: 230 V / 50 Hz (110 V / 60 Hz consult).

## OTHER VERSIONS

### ■ ■ ■ AUTO-PRO COUNTER

Version that adds an programmer/orange counter that will allow us to:

- Count and control the total number of oranges squeezed.
- Program the number of oranges to be squeezed per serving.



Programmer and orange counter function.

#### TYPE OF CONSUMPTION

